

# Multimodal neuroimaging in presurgical evaluation of childhood epilepsy

Da Eun Jung, M.D.<sup>1</sup> and Joon-Soo Lee, M.D.<sup>2</sup>

Department of Pediatrics<sup>1</sup>, Ajou University School of Medicine, Suwon, Korea

Department of Pediatrics<sup>2</sup>, Pediatric Epilepsy Clinic, Severance Children's Hospital, Brain Research Institute, Yonsei University College of Medicine, Seoul, Korea

Received: 5 June 2010, Revised: 12 July 2010

Accepted: 15 July 2010

Corresponding author: Joon Soo Lee, M.D.

Department of Pediatrics, Pediatric Epilepsy Clinic, Severance Children's Hospital, Brain Research Institute, Yonsei University College of Medicine, 134, Shinchon-dong, Seodaemun-gu, Seoul 120-752, Korea.

Tel: +82.2-2228-2061, Fax: +82.2-393-9118

E-mail: Joonsl96@yuhs.ac

In pre-surgical evaluation of pediatric epilepsy, the combined use of multiple imaging modalities for precise localization of the epileptogenic focus is a worthwhile endeavor. Advanced neuroimaging by high field Magnetic resonance imaging (MRI), diffusion tensor images, and MR spectroscopy have the potential to identify subtle lesions. <sup>18</sup>F-FDG positron emission tomography and single photon emission tomography provide visualization of metabolic alterations of the brain in the ictal and interictal states. These techniques may have localizing value for patients which exhibit normal MRI scans. Functional MRI is helpful for non-invasively identifying areas of eloquent cortex. These advances are improving our ability to noninvasively detect epileptogenic foci which have gone undetected in the past and whose accurate localization is crucial for a favorable outcome following surgical resection.

**Key words:** Multimodal neuroimaging, Childhood epilepsy, Surgery

Copyright © 2010 by The Korean Pediatric Society

## Introduction

Surgery for treatment of epilepsy has emerged as an important option for treatment of children with epilepsy that is refractory to antiepileptic drug management. The causes of intractable childhood epilepsy are quite variable, and in pediatric candidates for epilepsy surgery, focal cortical dysplasia (FCD) is the predominant etiology<sup>1)</sup>. A presurgical evaluation starts with a complete seizure history, physical and neurological examinations, video-EEG monitoring, and high-resolution magnetic resonance imaging (MRI) of the brain to assess structural abnormalities<sup>2)</sup>. These investigations are complemented by interictal and ictal single photon emission tomography (SPECT) injection, interictal <sup>18</sup>F-fluorodeoxyglucose (FDG) positron emission tomography (PET), and neuropsychological examination. The cornerstone of successful surgery is accurate localization of the brain region responsible for the onset of seizure. Modern imaging techniques

have therefore been improved for the detection of epileptogenic lesions, which frequently evolve to secondary generalized epileptic encephalopathy<sup>3)</sup>.

In this review, we describe the current role of structural and functional brain imaging modalities for presurgical evaluation of patients with intractable childhood epilepsy with a focus on FCD.

## Structural neuroimaging

MRI is an essential neuroimaging tool which is used to assist in the identification of an epileptogenic substrate. FCD is a common cause of pharmacoresistant epilepsy that is amenable to surgical resective treatment. The identification of structural FCD by MRI can contribute to the detection of the epileptogenic zone and improve the outcome of epilepsy surgery. MRI epilepsy protocols that include specific T1 and T2 weighted, and fluid-attenuated inversion recovery (FLAIR) sequences give complementary

information about the characteristic imaging features of FCD; focal cortical thickening, blurring of the gray-white junction, high FLAIR signal, and gyral anatomical abnormalities<sup>4</sup>. Conventional spin-density or fast multiplanar inversion-recovery images may give better delineation of the gray-white interface<sup>5</sup>. The heavily T2-weighted FLAIR sequence enables detection of more subtle signal abnormalities in the superficial cortical, subcortical, and periventricular regions due to suppression of the cerebrospinal fluid (CSF) signal. Limitations of the FLAIR technique include the occurrence of CSF pulsation artifacts in the basilar cisterns, relative suppression of contrast between gray and white matter, and limited usefulness in children under the age of 2 years (whose images may show patchy areas of hyperintensity within normal white matter)<sup>6</sup>. The use of gadolinium diethylenetriamine-pentaacetic acid (Gd-DTPA) contrast agents does not provide additional information in the evaluation of FCD. Information derived from the patient's history and video-EEG monitoring is often used in the interpretation of imaging studies and this information may be used to modify the MRI protocol, for example, to provide thin cuts through the suspected lobe of origin<sup>7</sup>. In the presence of FCD, however, removal of the visible lesion alone frequently does not lead to freedom from seizures. This indicates that the epileptogenic zone extends beyond the tissue which can be visualized with current structural imaging modalities. For this reason, there has been ongoing interest in utilizing new advanced MRI techniques to improve our ability to identify subtle lesions of cortical dysplasias. Technological advances such as the development of multichannel coils (32 phased array and beyond) and higher magnetic field strengths (3 T, 7 T, and greater) are likely to increase yield. The 3 T scans revealed different lesions which were not visible in the 1.5 T scans. Patients can benefit most from 3 T scans when a dysplasia is suspected<sup>8</sup>. The combination of 3 T and scans with the use of a specific phased-array head coil further increases the visualization of an MRI abnormality in presurgical epilepsy evaluation<sup>9</sup>.

## Functional Neuroimaging

Functional imaging detects changes in cerebral metabolism or cerebral perfusion in the interictal or ictal state. Nuclear medicine plays an important role in the presurgical assessment of patients with refractory epilepsy. Correct localization of the ictal onset zone with the use of SPECT or PET is associated with an improved surgical outcome. Quantitative processing of structural MR data and advanced MRI such as diffusion tensor imaging and MR spectroscopy have the potential to identify subtle lesions.

### 1. Positron-emission tomography (PET)

Hypometabolism identified by FDG-PET has been ascribed to factors such as neuronal loss, diaschisis, inhibitory processes, reduction in synaptic density, or decreased blood-brain barrier glucose transporter activity<sup>10-12</sup>. Interictal <sup>18</sup>F-FDG-PET is routinely used to detect brain areas of hypometabolism, which usually encompass the seizure onset zone and can also extend beyond this zone<sup>13</sup>. Thus, <sup>18</sup>F-FDG PET has lateralizing rather than localizing value in temporal lobe epilepsy (TLE). However, because of the poor resolution of this imaging modality, the focus may in fact be at the margin of the area of hypometabolism. A recent report<sup>14</sup> has demonstrated that co-registering or fusing the PET data with the structural MRI can improve the ability to identify subtle cortical dysplasias. Such studies have demonstrated that in patients with previously MR-negative test results, the fusion information helped to identify lesions, guide surgical planning, and improve overall surgical outcomes. The presence of contralateral cortical hypometabolism predicts a low chance of seizure freedom after temporal lobectomy<sup>15</sup> and the extent of resection of brain areas with hypometabolism on FDG-PET is correlated with improved seizure outcome<sup>16</sup>. The localizing value of FDG-PET in neocortical epilepsy was significantly worse in patients with extratemporal epilepsy, relative to patients with TLE<sup>17</sup>. Also, for assessment of FDG-PET, it is advisable to use an automated technique to compare the patient's images to normal data images in a database in addition to visual interpretation of the images, since automated techniques have proven to be more accurate. A semi-automated method for assessment of asymmetries in the brain cortex was developed which compares activity concentrations in homotopic cortical areas<sup>18</sup>. When these differences exceed a predefined threshold, the areas with lower activity are marked and 3-dimensional surface rendered images are created to guide placement of intracranial electrodes (ECoG). This step is followed by surgical resection. The sensitivity-specificity pairs for correct localization of epileptogenic lobes based on the ECoG results were found to be best for the 15% threshold (80/94%, accuracy 0.90)<sup>18</sup>. This objective PET method enables accurate determination of cortical asymmetries, and it has proven to be highly efficient in guiding epilepsy surgery.

Although <sup>18</sup>FDG, a glucose analog, has been the most common radiotracer nuclide used in PET imaging, it is possible to perform PET imaging with other radiotracers. For example, flumazenil, a benzodiazepine antagonist that acts as a competitive inhibitor against the  $\gamma$ -aminobutyric acid (GABA)<sub>A</sub> receptor, can be labeled with a <sup>11</sup>carbon (<sup>11</sup>C) radiotracer which has a considerably shorter half-life. Because GABA<sub>A</sub> is the principal inhibitory neurotransmitter in the brain, its role in epilepsy is of

ongoing interest. Reports have suggested that, relative to  $^{18}\text{F}$ FDG-PET, flumazenil provides improved localization and better correlation with the epileptogenic focus<sup>19,20</sup>. Another ligand of interest is  $^{11}\text{C}$ -alpha-methyl-L-tryptophan ( $^{11}\text{C}$ -AMT), an analog of tryptophan and a precursor to serotonin. This ligand has also been reported to be specific for differentiating epileptogenic from nonepileptogenic foci in patients with intractable epilepsy with or without tuberous sclerosis complex<sup>21</sup>. Resection of tubers with increased AMT uptake is highly desirable to achieve a seizure-free surgical outcome in children with tuberous sclerosis complex and intractable epilepsy. AMT PET can provide independent complementary information regarding the localization of epileptogenic regions in tuberous sclerosis complex and enhance the confidence of patient selection for successful epilepsy surgery<sup>22</sup>. The combination of some of these or other novel radioligands with PET-MRI technology may increase the rate of detection of FCD. However, these tracers are not widely available and the superiority of studying these receptor systems over glucose metabolism in the presurgical evaluation of patients with refractory epilepsy remains to be proven. Their use in clinical practice is currently limited<sup>23</sup>.

## 2. Single Photon Emission Computed Tomography (SPECT)

Ictal SPECT typically indicates areas of regional hyperperfusion, which reflects relative hypermetabolism in parts of the brain involved in onset or propagation of seizure<sup>24</sup>. Subtraction of the interictal images from the ictal images and co-registration to the patient's MRI (SISCOM) improves the interpretation of the study<sup>25</sup>. SISCOM has proven to be more sensitive and more specific compared with visual assessment. The importance of early tracer injection after the beginning of the seizure cannot be overemphasized. It has been shown that an injection delay of less than 20 seconds is significantly correlated with a correct localization. With early injections, the largest and most intense cluster is more likely to represent the seizure onset zone and not propagation of the seizure<sup>26</sup>. The interpretation of automatically-generated SISCOM data is generally straightforward. The result of the SISCOM analysis must be concordant with the result of the visual comparison of the ictal and interictal images, and other data related to the presurgical evaluation. Furthermore, SISCOM may provide a false negative test result because of subclinical seizure activity at the moment of tracer injection for interictal SPECT imaging<sup>26</sup>. Therefore, EEG monitoring during the interictal injection should be routinely performed. PET results were similarly reliable in lateralizing the temporal epileptic area, while its efficacy was lower for extratemporal cases. SISCOM was found to

effectively localize lesions in extratemporal cases, but its efficacy is lower in temporal lesions<sup>27</sup>.

## 3. Magnetic resonance spectroscopy (MRS)

Reduced 1H-MRS N-acetyl aspartate over choline (NAA/Cho) and N-acetyl aspartate over creatine (NAA/Cr) have been demonstrated in FCD. Large increases in GABA, alanine, tyrosine, acetate, inositol, glucose, and lactate, as well as decreased NAA were found in a group of four patients with "mild" cortical dysplasia<sup>28</sup>. These findings may reflect underlying regional structural abnormalities under the resolution of conventional MRI. Alternatively, decreases in N-acetyl aspartate may reflect neuronal or glial cell dysfunction<sup>29</sup>. The clinical utility of MRS in the evaluation of FCD is not known because MRS is limited by spatial sampling and the above findings are non-specific for FCD. Reduced NAA/Cho ratios outside the epileptogenic region have been reported in temporal lobe epilepsy, and correlate with reductions in seizure-free outcomes after surgery<sup>30</sup>. However, there are no data supporting this observation in an FCD setting. The sensitivity and specificity of MRS for detecting FCD has not been systematically studied. In another study, preoperative reductions in the NAA/Cr ratio in the non-operated temporal lobe or the presence of higher metabolic ratios contralateral to the proposed surgery are associated with surgical failure. The predictive value of 1H MRS absolute metabolite concentrations for outcome in mesial temporal lobe epilepsy requires further investigation.

## 4. Diffusion tensor imaging (DTI)

DTI measures the molecular motion of water within brain tissue. The diffusivity (a measurement of the amplitude of the diffusional motion) and anisotropy (a measurement of the directionality of the motion) can be calculated from the DTI sequence. In the physiologic state, the diffusion of water is restricted by cell membranes. In the white matter, water diffusion is typically highly anisotropic. This characteristic is used in the reconstruction of white matter tracts using tractography<sup>31</sup>. The principal diffusion direction of the brain structure to be examined can be color-coded, resulting in color-coded maps or directionally encoded fractional anisotropy (FA) maps. In these maps, the fibers have been given different colors (blue for superior-inferior, green for anterior-posterior and red for left to right) depending on their direction of diffusion. DTI has also been investigated in terms of its use in differentiating pathologic tissue from normal tissue based on differences in the anisotropic diffusion of water<sup>32</sup>. Several investigations using DTI have revealed higher diffusivity and lower anisotropy in the zones of FCD<sup>33</sup>, and in surrounding brain

tissue that appeared normal in conventional MRI<sup>34</sup>). Although clinical experience with DTI in the presurgical evaluation of epilepsy is limited, two cases have been published so far where surgery was aided by DTI abnormalities<sup>35,36</sup>. DTI may prove valuable for identifying epileptogenic foci as well as more optimally defining the extent of the lesion for surgical resection. In addition, the molecular diffusion of water is typically highly anisotropic in white matter tracts. This characteristic is being explored for reconstruction of fiber tracts using tractography<sup>37</sup>. The first data set of patients with FCD suggests that there are decreased fiber bundle densities adjacent to an area of FCD<sup>38</sup>. Fiber tractography will improve our understanding of brain pathology, especially that of white-matter abnormalities. Fiber tracking can be used in conjunction with functional MRI to analyze the anatomical connections and functional pathways for diagnostic purposes and presurgical planning<sup>39</sup>. The usefulness for DTI and tractography in various pathologies, including FCD, will be in the detection and full delineation of structural abnormalities, and in determining both the functional connectivity of a given area of the cortex and the spatial relationship between the lesion and important white matter tracts. This information may provide critical information for the planning of resective surgery in order to reduce functional morbidity. However, further improvements in techniques and stable post-processing analyses are needed to increase the utility of DTI in clinical applications.

### 5. Functional MRI (fMRI)

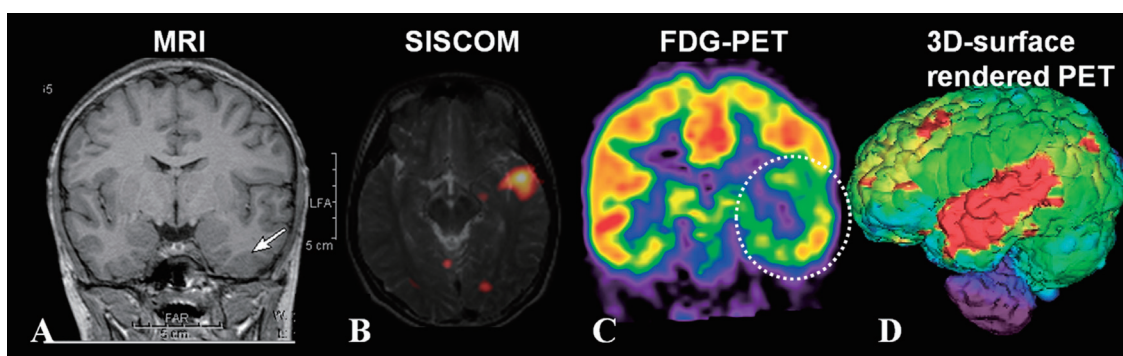
Identification of eloquent areas of cortex responsible for speech, motor, and visual function, to assist in the surgical resection plan, can be obtained non-invasively through the use of fMRI. Functional MRI identifies changes in cerebral blood flow by measuring MRI contrast differences between oxygenated and

deoxygenated hemoglobin. Increased cerebral blood flow is thought to represent functional activation of the surrounding cortex. Primary sensorimotor areas can be readily identified non-invasively by fMRI, and the results correlate well, but not perfectly, with those of cortical stimulation and evoked potentials<sup>40-43</sup>. A major role of fMRI in epilepsy surgery work-up is in lateralizing language functions as a means to supplement or replace the intracarotid amobarbital test. A panel of tasks, including verbal fluency and language comprehension, has been advocated to increase the reliability of fMRI<sup>44</sup>. This modality also predicted language deficits following epilepsy surgery<sup>45</sup> and could influence surgical planning. The correlation between fMRI with various neuropsychological tests and the intracarotid amybarbital procedure (IAP, Wada-test) to predict memory decline after temporal lobectomy<sup>46</sup> and to determine the language dominant hemisphere has been studied<sup>47</sup>.

The main limitation of fMRI is its suboptimal specificity. A significant percentage of the cortical areas that are “activated” during an fMRI paradigm are dispensable for that specific function. Further work is therefore needed to clarify the role of fMRI in localizing eloquent cortex. At present, this method must be considered a research tool rather than part of the routine diagnostic workup of patients undergoing epilepsy surgery.

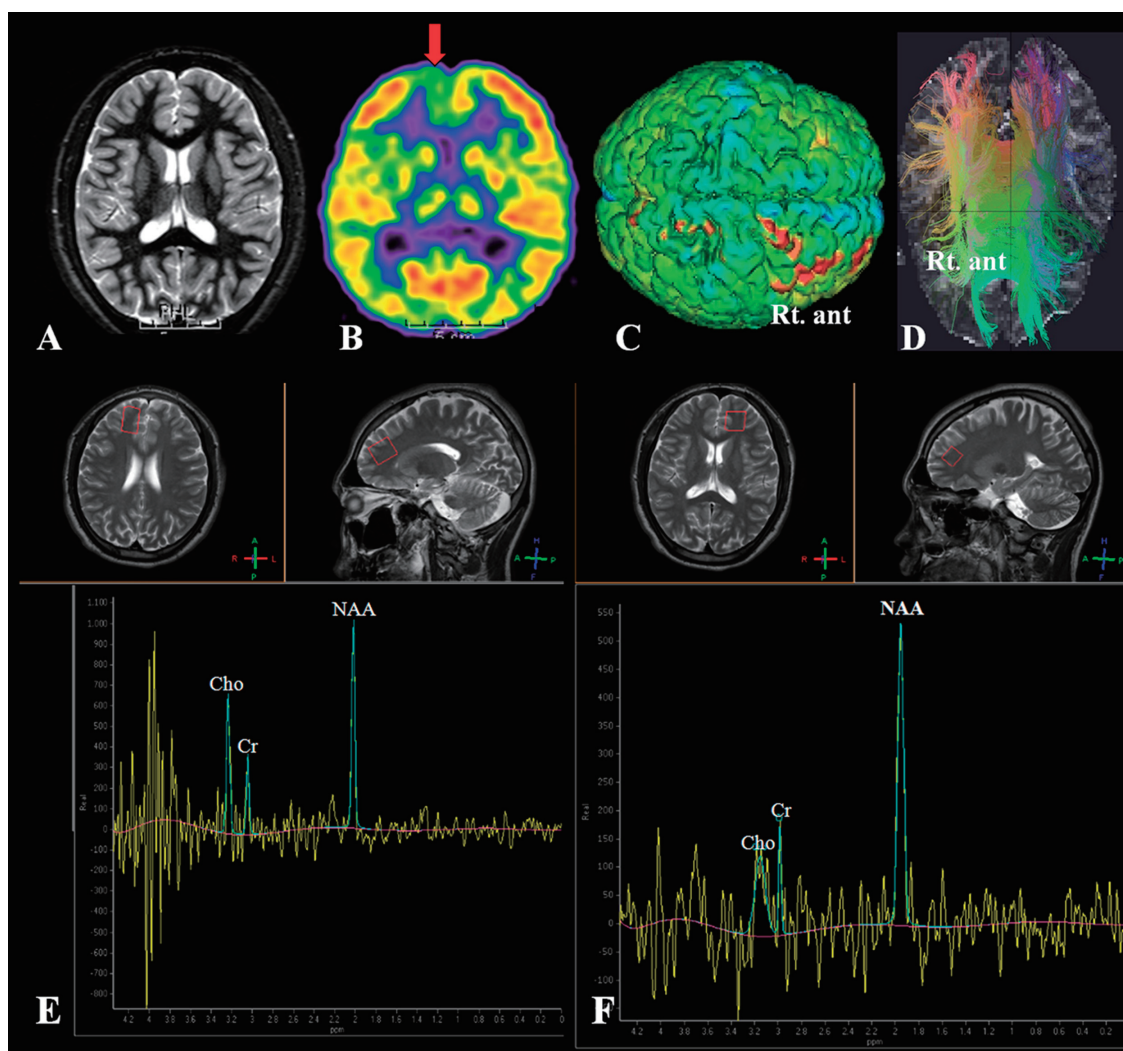
### Conclusions

The likelihood of benefiting from surgical treatment was found to be significantly higher if localization with more imaging modalities were concordant with respect to the resected brain area (Fig. 1, 2). Developments in imaging technology and digital post-processing may increase the yield for imaging studies to detect the epileptogenic lesion and to characterize its connectivity within the epileptic brain. A better understanding of the concordant



**Fig. 1.** Convergent multimodal imaging in a 11-year-old boy with left temporal lobe epilepsy. Cortex thickening in the left temporal lobe is seen on the corresponding coronal T1W1 MRI. SISCOM demonstrated a cluster of hyperperfusion in the left temporal lobe, consistent with the patient's ictal EEG. 18-FDG PET shows reduced metabolism in the overlying cortex. All imaging data were concordant with electroclinical and neuropsychological data and the patient underwent a neocortical temporal lobectomy. The patient has since remained seizure-free. Histopathology after temporal lobectomy showed FCD type 2A.





**Fig. 2.** Multimodal imaging in a 17-year-old boy with Lennox-Gastaut syndrome. (A) The axial T2WI MRI is normal. (B) 18F-FDG PET shows asymmetric hypometabolism in the Rt. frontal area. (C) 3-dimensional surface-rendered images of a FDG PET scan shows hypometabolism in the same area (indicated by the red color) marked by the semiautomatic program for detecting cortical asymmetries. (D) Axia fiber tractography demonstrates decreased fiber bundle densities adjacent to an area of Rt. frontal lobe compared to the Lt. frontal lobe. Single-voxel MR spectra were acquired from both frontal areas. There is a reduction in NAA/choline, NAA/creatinine, and NAA in the right frontal pole (E) compared to that in the left frontal pole (F). The patient has remained seizure free after Rt. frontal lobectomy. Histopathology showed microdysgenesis.

relationship between structural and functional neuroimaging data is expected to lead to new approaches in epilepsy surgery and will likely improve surgical management of a large number of patients suffering from intractable epilepsy.

## References

- 1) Wyllie E, Comair YG, Kotagal P, Bulacio J, Bingaman W, Ruggieri P. Seizure outcome after epilepsy surgery in children and adolescents. *Ann Neurol* 1998;44:740-8.
- 2) Li LM, Fish DR, Sisodiya SM, Shorvon SD, Alsanjari N, Stevens JM. High resolution magnetic resonance imaging in adults with partial or secondary generalised epilepsy attending a tertiary referral unit. *J Neurol Neurosurg Psychiatry* 1995;59:384-7.
- 3) Barkovich AJ, Kuzniecky RI. Neuroimaging of focal malformations of cortical development. *J Clin Neurophysiol* 1996;13:481-94.
- 4) Widdess-Walsh P, Diehl B, Najm I. Neuroimaging of focal cortical dysplasia. *J Neuroimaging* 2006;16:185-96.
- 5) Ruggieri PM, Najm IM. MR imaging in epilepsy. *Neurol Clin* 2001;19:477-89.
- 6) De Coene B, Hajnal JV, Gatehouse P, Longmore DB, White SJ, Oatridge A, et al. MR of the brain using fluid-attenuated inversion recovery (FLAIR) pulse sequences. *AJNR Am J Neuroradiol* 1992;13:1555-64.
- 7) Wehner T, Luders H. Role of Neuroimaging in the presurgical evaluation of epilepsy. *J Clin Neurol* 2008;4 1-16.
- 8) Zijlmans M, de Kort GA, Witkamp TD, Huiskamp GM, Seppenwoolde JH, van Huffelen AC, et al. 3T versus 1.5T phased-array MRI in the presurgical work-up of patients with partial epilepsy of uncertain focus. *J Magn Reson Imaging* 2009;30:256-62.
- 9) Knake S, Triantafyllou C, Wald LL, Wiggins G, Kirk GP, Larsson PG, et al. 3T phased array MRI improves the presurgical evaluation in focal

- epilepsies: a prospective study. *Neurology* 2005;65:1026-31.
- 10) Henry TR, Babb TL, Engel J, Jr, Mazziotta JC, Phelps ME, Crandall PH. Hippocampal neuronal loss and regional hypometabolism in temporal lobe epilepsy. *Ann Neurol* 1994;36:925-7.
  - 11) Foldvary N, Lee N, Hanson MW, Coleman RE, Hulette CM, Friedman AH, et al. Correlation of hippocampal neuronal density and FDG-PET in mesial temporal lobe epilepsy. *Epilepsia* 1999;40:26-9.
  - 12) Cornford EM, Gee MN, Swartz BE, Mandelkern MA, Bland WH, Landaw EM, et al. Dynamic [18F]fluorodeoxyglucose positron emission tomography and hypometabolic zones in seizures: reduced capillary influx. *Ann Neurol* 1998;43:801-8.
  - 13) Won HJ, Chang KH, Cheon JE, Kim HD, Lee DS, Han MH, et al. Comparison of MR imaging with PET and ictal SPECT in 118 patients with intractable epilepsy. *AJNR Am J Neuroradiol* 1999;20:593-9.
  - 14) Salamon N, Kung J, Shaw SJ, Koo J, Koh S, Wu JY, et al. FDG-PET/MRI coregistration improves detection of cortical dysplasia in patients with epilepsy. *Neurology* 2008;71:1594-601.
  - 15) Choi JY, Kim SJ, Hong SB, Seo DW, Hong SC, Kim BT, et al. Extratemporal hypometabolism on FDG PET in temporal lobe epilepsy as a predictor of seizure outcome after temporal lobectomy. *Eur J Nucl Med Mol Imaging* 2003;30:581-7.
  - 16) Vinton AB, Carne R, Hicks RJ, Desmond PM, Kilpatrick C, Kaye AH, et al. The extent of resection of FDG-PET hypometabolism relates to outcome of temporal lobectomy. *Brain* 2007;130:548-60.
  - 17) Yun CH, Lee SK, Lee SY, Kim KK, Jeong SW, Chung CK. Prognostic factors in neocortical epilepsy surgery: multivariate analysis. *Epilepsia* 2006;47:574-9.
  - 18) Muzik O, Chugani DC, Shen C, de Silva EA, Shah J, Shah A, et al. Objective method for localization of cortical asymmetries using positron emission tomography to aid surgical resection of epileptic foci. *Comput Aided Surg* 1998;3:74-82.
  - 19) Muzik O, de Silva EA, Juhasz C, Chugani DC, Shah J, Nagy F, et al. Intracranial EEG versus flumazenil and glucose PET in children with extratemporal lobe epilepsy. *Neurology* 2000;54:171-9.
  - 20) Hammers A, Koeppe MJ, Richardson MP, Hurlmann R, Brooks DJ, Duncan JS. Grey and white matter flumazenil binding in neocortical epilepsy with normal MRI. A PET study of 44 patients. *Brain* 2003;126:1300-18.
  - 21) Juhasz C, Chugani DC, Muzik O, Shah A, Asano E, Mangner TJ, et al. Alpha-methyl-L-tryptophan PET detects epileptogenic cortex in children with intractable epilepsy. *Neurology* 2003;60:960-8.
  - 22) Kagawa K, Chugani DC, Asano E, Juhasz C, Muzik O, Shah A, et al. Epilepsy surgery outcome in children with tuberous sclerosis complex evaluated with alpha-[11C]Methyl-L-Tryptophan positron emission tomography (PET). *J Child Neurol* 2005;20:429-38.
  - 23) Goffin K, Dedeurwaerdere S, Van Laere K, Van Paesschen W. Neuronuclear assessment of patients with epilepsy. *Semin Nucl Med* 2008;38:227-39.
  - 24) Van Paesschen W. Ictal SPECT. *Epilepsia* 2004;45 Suppl 4:35-40.
  - 25) O'Brien TJ, So EL, Mullan BP, Hauser MF, Brinkmann BH, Bohnen NI, et al. Subtraction ictal SPECT co-registered to MRI improves clinical usefulness of SPECT in localizing the surgical seizure focus. *Neurology* 1998;50:445-54.
  - 26) Lee SK, Lee SY, Yun CH, Lee HY, Lee JS, Lee DS. Ictal SPECT in neocortical epilepsies: clinical usefulness and factors affecting the pattern of hyperperfusion. *Neuroradiology* 2006;48:678-84.
  - 27) Kim JT, Bai SJ, Choi KO, Lee YJ, Park HJ, Kim DS, et al. Comparison of various imaging modalities in localization of epileptogenic lesion using epilepsy surgery outcome in pediatric patients. *Seizure* 2009;18:504-10.
  - 28) Aasly J, Silfvenius H, Aas TC, Sonnewald U, Olivecrona M, Juul R, et al. Proton magnetic resonance spectroscopy of brain biopsies from patients with intractable epilepsy. *Epilepsy Res* 1999;35:211-7.
  - 29) Kuzniecky R, Palmer C, Hugg J, Martin R, Sawrie S, Morawetz R, et al. Magnetic resonance spectroscopic imaging in temporal lobe epilepsy: neuronal dysfunction or cell loss? *Arch Neurol* 2001;58:2048-53.
  - 30) Kuzniecky R, Hugg J, Hetherington H, Martin R, Faught E, Morawetz R, et al. Predictive value of 1H MRSI for outcome in temporal lobectomy. *Neurology* 1999;53:694-8.
  - 31) Pierpaoli C, Jezzard P, Basser PJ, Barnett A, Di Chiro G. Diffusion tensor MR imaging of the human brain. *Radiology* 1996;201:637-48.
  - 32) Sundgren PC, Dong Q, Gomez-Hassan D, Mukherji SK, Maly P, Welsh R. Diffusion tensor imaging of the brain: review of clinical applications. *Neuroradiology* 2004;46:339-50.
  - 33) Arfanakis K, Hermann BP, Rogers BP, Carew JD, Seidenberg M, Meyerand ME. Diffusion tensor MRI in temporal lobe epilepsy. *Magn Reson Imaging* 2002;20:511-9.
  - 34) Rugg-Gunn FJ, Eriksson SH, Symms MR, Barker GJ, Duncan JS. Diffusion tensor imaging of cryptogenic and acquired partial epilepsies. *Brain* 2001;124:627-36.
  - 35) Okumura A, Fukatsu H, Kato K, Ikuta T, Watanabe K. Diffusion tensor imaging in frontal lobe epilepsy. *Pediatr Neurol* 2004;31:203-6.
  - 36) Rugg-Gunn FJ, Eriksson SH, Symms MR, Barker GJ, Thom M, Harkness W, et al. Diffusion tensor imaging in refractory epilepsy. *Lancet* 2002;359:1748-51.
  - 37) Wakana S, Jiang H, Nagae-Poetscher LM, van Zijl PC, Mori S. Fiber tract-based atlas of human white matter anatomy. *Radiology* 2004;230:77-87.
  - 38) Lee SK, Kim DI, Mori S, Kim J, Kim HD, Heo K, et al. Diffusion tensor MRI visualizes decreased subcortical fiber connectivity in focal cortical dysplasia. *Neuroimage* 2004;22:1826-29.
  - 39) Lori NF, Akbudak E, Shimony JS, Cull TS, Snyder AZ, Guillery RK, et al. Diffusion tensor fiber tracking of human brain connectivity: acquisition methods, reliability analysis and biological results. *NMR Biomed* 2002;15:494-515.
  - 40) Jack CR Jr, Thompson RM, Butts RK, Sharbrough FW, Kelly PJ, Hanson DP, et al. Sensory motor cortex: correlation of presurgical mapping with functional MR imaging and invasive cortical mapping. *Radiology* 1994;190:85-92.
  - 41) Rao SM, Binder JR, Bandettini PA, Hammeke TA, Yetkin FZ, Jesmanowicz A, et al. Functional magnetic resonance imaging of complex human movements. *Neurology* 1993;43:2311-8.
  - 42) Hammeke TA, Yetkin FZ, Mueller WM, Morris GL, Haughton VM, Rao SM, et al. Functional magnetic resonance imaging of somatosensory stimulation. *Neurosurgery* 1994;35:677-81.
  - 43) Yetkin FZ, Mueller WM, Morris GL, McAuliffe TL, Ulmer JL, Cox RW, et al. Functional MR activation correlated with intraoperative cortical mapping. *AJNR Am J Neuroradiol* 1997;18:1311-5.
  - 44) Gaillard WD. Functional MR imaging of language, memory, and sensorimotor cortex. *Neuroimaging Clin N Am* 2004;14:471-85.
  - 45) Sabsevitz DS, Swanson SJ, Hammeke TA, Spanaki MV, Possing ET, Morris GL 3rd, et al. Use of preoperative functional neuroimaging to

- predict language deficits from epilepsy surgery. *Neurology* 2003;60:1788-92.
- 46) Rabin ML, Narayan VM, Kimberg DY, Casasanto DJ, Glosser G, Tracy JL, et al. Functional MRI predicts post-surgical memory following temporal lobectomy. *Brain* 2004;127:2286-98.
- 47) Gaillard WD, Balsamo L, Xu B, Grandin CB, Braniecki SH, Papero PH, et al. Language dominance in partial epilepsy patients identified with an fMRI reading task. *Neurology* 2002;59:256-65.